

The logo consists of a square with a vertical color gradient from green at the top to teal at the bottom. The word "Hyland" is centered in white serif font, with a small trademark symbol (TM) to the upper right of the 'd'.

Hyland™

Alfresco TTL #142

HANDOUT

Hyland™



ACS 7.3 GENERAL AVAILABILITY

- Release scheduled **November 14th**
- Highlights
 - First version built with **Java 17** (despite *Java 11* is still supported)
 - First version supporting **Angular 14** for ADF
 - New REST API endpoints related to *Actions*
 - 20+ Bugs fixed
 - 2 Security patches
 - (Enterprise) Support for Elasticsearch **and** OpenSearch
 - (Enterprise) Activiti Web Console has been removed
- Stay tuned at Alfresco Hub and Alfresco website for release note and download

Service	Version
Alfresco Content Services	7.3.0
Alfresco Share	7.3.0
Alfresco Transform	2.6.0
Alfresco Office Services	1.5.0
Alfresco Content Application	3.1.0
Alfresco Search Services	2.0.5
ActiveMQ	5.17.1
Postgres	14.4
Maven SDK	4.5
Java SDK	5.2

LET'S TALK ABOUT SOFTWARE UPGRADES

■ In resume

- You upgrade to reduce security risks
 - You upgrade to improve solution integration
 - You upgrade to the release that has proven reliability
 - You prefer to stay one, two or more releases behind the current release to ensure stability — but that could be at the cost of not taking advantage of improved security and new features
 - You desire additional support and enablement documentation with each release to help upgrades run smoother
- ## ■ See the results in detail on the Hub

UPDATE ON AARM AND DOCKER DESKTOP



▪ AARM

- github.com/aborroy/alfresco-dockerx-builder
- Running Alfresco on Apple M1 chips
- Progress is being made, tests and feedback welcome

▪ Docker Desktop Extension

- github.com/AlfrescoLabs/alfresco-docker-extension
- Main pull request has been merged
- Build to come

TTL SPEAKERS WANTED!



Topics

- Open source projects
- Showcase of your best work
- Tips and tricks
- Discussions on best practices
- Technical talk and demos only!
- About Alfresco & Nuxeo or associated technologies
- And more! Just pitch it to the team



Benefits for Speakers

- Visibility in the ecosystem
- Goodies
- And other advantages



Alfresco Process Automation (APA)

- **Alain ESCAFFRE**
- AVP, Product Management

Alfresco TTL #142

QUESTION & ANSWERS

Hyland™



Hyland™

The logo consists of a square with a vertical gradient from green at the top to teal at the bottom. The word "Hyland" is centered in white serif font, with a small trademark symbol (TM) to the upper right of the 'd'.

Hyland™

Update on Alfresco Process Automation

TTL – DEC 2023

Alain Escaffre

AVP, Product Management, Platform

The Hyland logo is positioned in the bottom right corner of the slide. It consists of a square with a vertical gradient from green on the left to blue on the right. The word "Hyland" is written in white serif font across the center of the square, with a small trademark symbol (TM) to the upper right of the 'd'.

Hyland™

AGENDA

- Alfresco Process Automation in a nutshell
- Product update
- Future

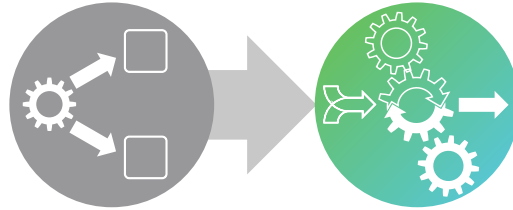
ALFRESCO PROCESS AUTOMATION IN A NUTSHELL

SHIFTS IN THE MARKET



Content → Information

- Expanding into more diverse types of content and information
- Differentiation at ability to manage at extreme scale



BPM → Hyperautomation

- “Surround” end-to-end business challenges like Lead to Cash and Supply Chain
- Must tie multiple 3rd party systems, departmental processes together
- Increasing need for performance



Search / Analytics → Actionable Insights

- Insights include decision support, content and process automation
- Persona-based insights are more valuable than generic AI/ML

WHY ALFRESCO PROCESS AUTOMATION



Challenges?

- Customer and Employee experience needs to be re-invented in increasingly shorter amount of time
- Information gets siloed in more systems than ever due to raising number of SaaS applications, making it complex to build transversal business processes
- IT industry faces dramatic skills shortage
- Competition is accrued with high level of innovation in leveraging data



Who?

- CEO, CIO, Digital transformation officers looking for empowering their teams to increasing business demand for new projects
- Departmental tech savvy teams looking for agile ways of creating value



What?

- Low Code application building
- Agile and touchless application lifecycle management
- Cloud Connectivity
- AI and ML empowerment

MARKET SEGMENTS

VERTICAL SOLUTIONS

Financial Services

- Account payable, Accounts Receivable
- Credit/Loan processing
- Underwriting (mortgage lender's process)

Banking

- Banking service requests,
- Claims handling
- Client Onboarding
- Fraud investigation

Public Sector

- Appeal process
- Tax collection processes
- RFP processes
- Hunting permit, licensing (i.e. alcohol, fishing...)

Manufacturing

- Engineering document transmittal

Publishing

- Content creation, approval, publication, archival

HORIZONTAL SOLUTIONS

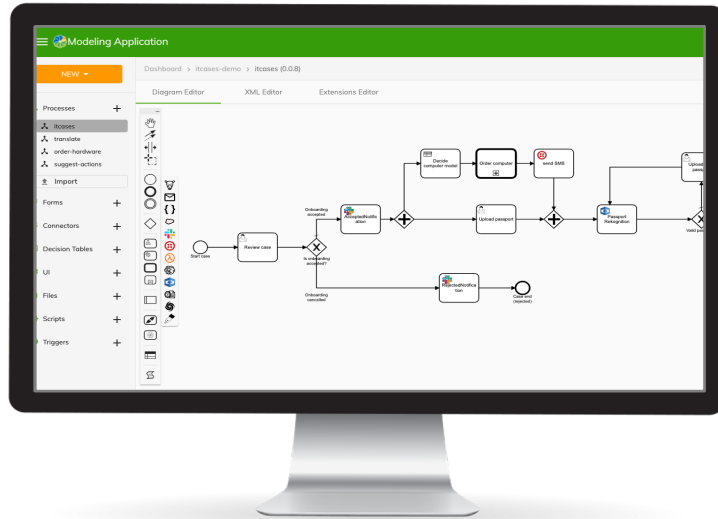
- HR processes
- Finance processes (AP, AR, Expenses)
- Policies & Procedures
- Incident Management
- Marketing collateral processes
- Sales processes
- Legal processes (Contract Management)
- Engineering processes

3 MAIN COMPONENTS

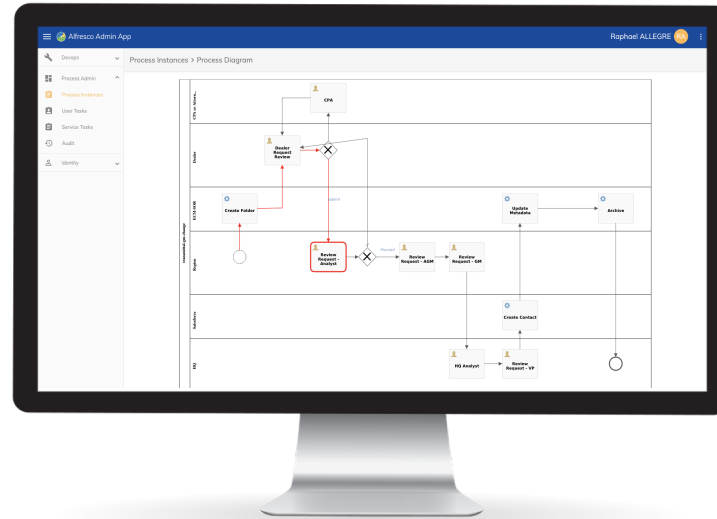
BUILD

DEPLOY/MONITOR

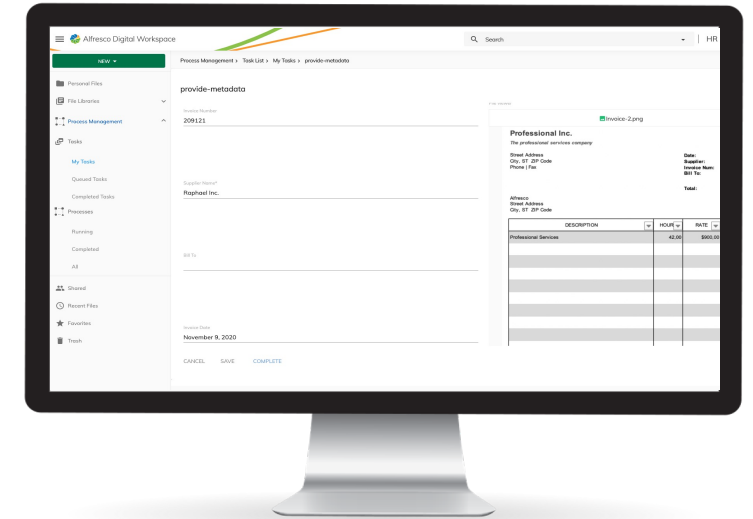
WORK



Modeling Env.



Admin App.



Digital Workspace(s)

OVERVIEW OF CURRENT END USER APPLICATION

Start Process

Process Management > Task List > My Tasks

NEW

Customize your filter

- Personal Files
- File Libraries
- Process Management
- Tasks
 - My Tasks 4
 - Queued Tasks 0
 - Completed Tasks
- Processes
 - Running
 - Completed
 - All
- Shared
- Recent Files
- Favorites
- Trash

Name	Status	Assignee	Completed By	Created Date	Last Modified	Due Date	Priority
task 1	ASSIGNED	superadminuser		9 minutes ago	9 minutes ago		None
task 1	ASSIGNED	superadminuser		4 hours ago	4 hours ago		None
display content	ASSIGNED	superadminuser		4 hours ago	4 hours ago		None
display content	ASSIGNED	superadminuser		6 hours ago	6 hours ago		None

Low-code App Dev Experience

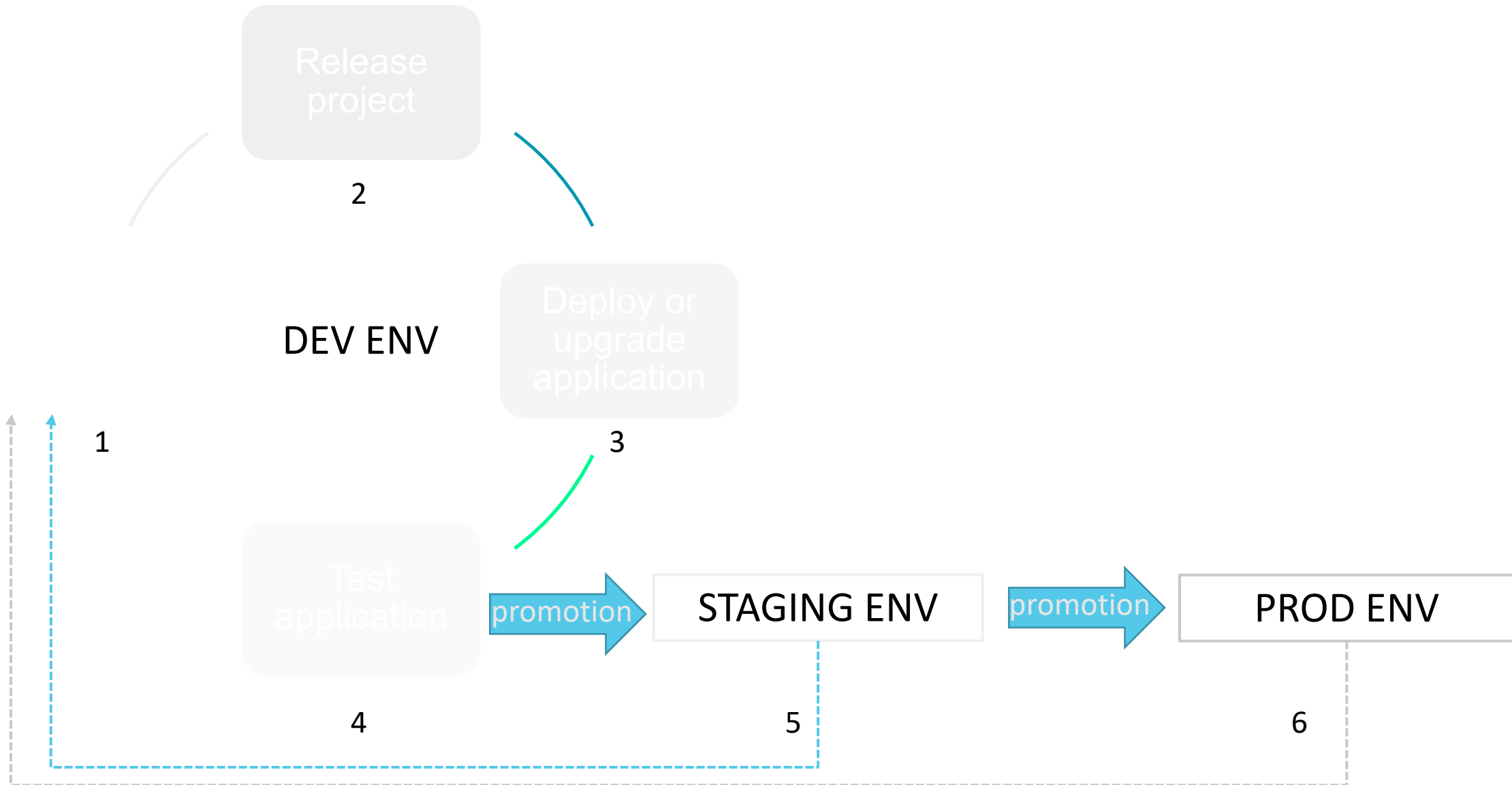
The Modelling Application is the environment to quickly build content-centric applications with visual editors for:

- BPMN Processes
- Web Forms
- Custom Form Controls
- DMN Decision Tables
- JS Scripts
- OOTB Connectors
- UIs
- Triggers
- Content Models

The image displays three overlapping screenshots of the 'Modelling Application' interface, illustrating different development capabilities:

- Top Screenshot:** Shows the 'Diagram Editor' for a BPMN process. The process starts with 'Start case', followed by a 'Review case' task, a decision diamond 'Is onboarding accepted?', and several 'Accepted notification' tasks. It includes connectors like 'Order computer model' and 'Upload passport', and ends with 'Case end (rejected)'. The left sidebar lists various connectors and decision tables. The right sidebar shows the 'Properties' panel for the selected process.
- Bottom-Left Screenshot:** Shows the 'Form Editor' for a form titled 'Invoice form'. The form contains fields for 'Invoice Number', 'Supplier Name', 'Bill To', 'Invoice Date', 'Total', and 'Invoice Type'. A message box at the top says 'Please, review that the invoice fields where extracted correctly'. The left sidebar shows the 'Form Editor' and 'JSON Editor' tabs.
- Bottom-Right Screenshot:** Shows the 'Content Model Editor' for a content model named 'finance2'. The left sidebar lists various content models. The right sidebar shows the 'Custom Types' section, including 'Invoice (fin2:invoice)' with fields like 'fin2:invoiceNum (d:int)', 'fin2:supplierName (d:text)', 'fin2:billTo (d:text)', 'fin2:total (d:text)', 'fin2:invoiceDate (d:text)', 'fin2:invoiceType (d:text)', and 'Custom Aspects' including 'Reviewable (fin2:reviewable)' with fields like 'fin2:status (d:text)', 'fin2:comments (d:text)', and 'fin2:paymentDate (d:date)'. The bottom sidebar shows the 'Triggers' section with 'start-scan-on-create' and 'Content Models' section with 'finance2'.

APA Application Lifecycle

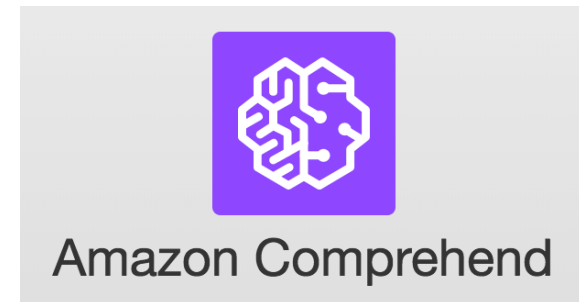


Changes need to be made in DEV ENV (*unless config changes*)

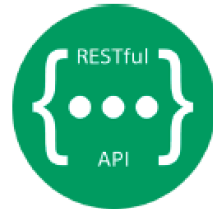
Intelligent Document Processing with AWS AI Connectors

A set of out-of-the-box AI connectors to easily perform automated AI-driven metadata extraction, content tagging and workflow decisioning with human review when needed. Example use cases:

- Automatically recognise and validate specific document types, places or people in images, apply correct metadata and route the flow accordingly
- Automatically detect personally identifiable information (PII), apply security marks and trigger human review when confidence level is low
- Automatically extract important metadata out of scanned documents (invoices, IDs, forms, etc...)
- Automatically speech to text podcasts and categorize transcripts
- And much more



Extending Through Connectors



**WE LISTEN TO OUR
CUSTOMERS**

APA 7.4 **RELEASED**

Digital Workspace users needed more flexibility within the task and process list and form layouts. They also wanted the facility to upload and track versions of attached files.

- They can now **customize the task and process lists**, show or hide specific columns or change the order of columns on the screen, providing improvements in locating information relevant to business needs and improved efficiency.
- **Attached files can now be updated with versions changes trackable.**
- Technical process data can be hidden, so that Digital Workspace users are not exposed to irrelevant information creating a cleaner Workspace.
- Modellers can configure the position of form field labels on the left, or on top of the form, tailoring the use of space and the user journey to the specific business configuration and needs.
- **The modelling app now provides previews of different screen sizes**, for simulating different device types.



Start Process

Process Management > Task List > My Tasks

NEW

Customize your filter

- Personal Files
- File Libraries
- Process Management
- Tasks
 - My Tasks 4
 - Queued Tasks 0
 - Completed Tasks
- Processes
 - Running
 - Completed
 - All

Name	Status	Assignee	Completed By	Created Date	Last Modified	Due Date	Priority
UserTaskToShowRestResult	ASSIGNED	hruser		5 hours ago	5 hours ago		
UserTaskToShowRestResult	ASSIGNED	hruser		5 hours ago	5 hours ago		
taskSimple	ASSIGNED	hruser		5 hours ago	5 hours ago		
taskSimple	ASSIGNED	hruser		5 hours ago	5 hours ago		

Columns

Search

- Name
- Status
- Assignee
- Completed By
- Created Date
- Last Modified
- Due Date
- Priority

Apply

◆ Process variables

Filter Process variable



Name	Type	Required	Display Name	Value	
requestid	string	false	Request ID	process 1	

requestid

string

Required

Available in the web application ⓘ

Yes

No

Request ID

Value

Expression

process 1

Cancel

Update

Defining if Process Variable is available in the application

Dimensions:

custom



390 x 844

form

First name _____

Last name _____

SAVE

Apple iPhone 12 Pro
390px x 844px

Apple iPhone 8
375px x 667px

Samsung S22
360px x 780px

Samsung Galaxy Note
400px x 640px

APA 7.5 **RELEASED**

- A pre-defined "**Application Manager**" role is available OOTB, and can be assigned to any user, from the Admin app, with pre-defined permissions for Process Admin, Process Instances and User Tasks. Providing a predefined role for ease of appointing permissions to users with similar access requirements.
- **Multiple tabs within the Modeling Application**, enables the user to view, work on and switch across multiple processes.
- **The print facility has been improved from customer feedback**. Printing all the relevant task form information consistently and removing unnecessary web page elements.
- **Users can now quickly locate recently started processes**, helping them locate new tasks faster.
- If you have accidentally started a process, or were running tests, you can now completely delete a process instance, and all associated data from the Admin app, regardless of the state the process is in.
- A simple multi-line text editor **provides a Form Designer with the ability to add html to forms**, for example, to add some additional design layout, a bold warning message, or create a button for a custom function.

APA 7.5 **RELEASED**

- **Admin users can now export audit logs in csv format**, helping to review, trace events and fulfill legal data and compliance obligations.
- Process Admins can select a default app, saving navigation time when switching between Process Instances, User Tasks, Service Tasks and Audit views.
- Admin app users configure columns displayed in the Process instances and User tasks pages to customize the view according to their preferences, creating more flexibility to improve usability.
- The Modeling Application user can select automatic task assignment. Tasks will then be assigned to the next user from a predefined list of candidates, **removing the need to spend time allocating tasks to team member manually.**
- Modeling Application users are able to search for element in the project tree.
- Modelling Application users can specify the position of radio buttons in forms, either horizontally or vertically, depending on preference.

The screenshot displays a web-based modeling application interface. At the top, the browser address bar shows the URL: `canary-apa.envalfresco.com/modeling/#/projects/3105b7db-a31a-4821-9caa-8210bf98c2bf/process/194536f3-fd66-4cb4-8f8e-33eae18bb67c`. The application header includes a navigation menu with icons for back, home, and search, a user profile dropdown labeled "test-rafal", and buttons for "MU", "Validate", and "Release".

The main workspace is divided into several sections:

- Left Panel:** A sidebar titled "+ New" containing a tree view of "Processes" (p2, p3, simple-usertask), "Forms", "Form Widgets", "Authentications", "Connectors", "Decision Tables", "UI", "Files", "Scripts", "Triggers", "Content Models", and "Data Models".
- Top Tab Bar:** Three tabs are visible: "p2", "p3", and "simple-usertask". The "p3" tab is currently active.
- Diagram Area:** The central workspace shows a BPMN diagram with a start event (circle), a task (rounded rectangle), and an end event (circle). A toolbar on the left provides various modeling tools like pan, zoom, and delete.
- Right Panel:** A "Properties" panel for the selected task, showing fields for "Process ID" (Process_h4-XtLjr0), "Version" (0.0.7), "Diagram name" (simple-usertask), and "Process definition name" (simple-usertask). It also includes a checked "Executable" checkbox and sections for "Documentation" and "Category". At the bottom, there are buttons for "Edit Process Variables", "Edit Messages", and "Edit Errors".

Multiple Tabs in the Modeling Application



Start a process



Files

All

Recent

Favorites

Libraries

Shared

Deleted

Workflow

Tasks

Processes

Saved Searches

Search name 1

Search name 2

Search name 3

Search name 4

New process



Search

Recently used



Request a PO

Submit a request to the finance department to issue and PO to a vendor



Request a PO

Submit a request to the finance department to issue and PO to a vendor

Legal



Request a PO

Submit a request to the finance department to issue and PO to a vendor



Request a PO

Submit a request to the finance department to issue and PO to a vendor



Request a PO

Submit a request to the finance department to issue and PO to a vendor



Status

Completed



In progress

In progress

In progress

In progress

Not started

Not started

Not started

Not started

Not started

Not started

Not started

APA 7.6 **RELEASED**

- **Process variable displayed as a column in the admin application:**
The Admin Application has the ability of displaying the process variable marked as available in the web application as a column in the processes and tasks views.
- Ability of retrieving the assignee of the user task. A new predefined form variable “sys_task_assignee” has been created. It can be mapped to the process variable. It **allows the retrieving of the user task assignee in the script task.**
- It is now possible to recognize which user in the candidate group claimed the task
- **Bulk reassignment of the User Tasks.** In the User Tasks view, the Admin Application user is able to reassign multiple user tasks at the same time from one user to another user
- **REST connector support for files.** The Modeling Application user can use the Rest Connector to send files. The file process variable can be mapped to the Rest Connector request Payload
- Improved deployment service - no need to update existing authentication credentials

- Devops
- Process Admin
- Applications list
- Process Instances
- User Tasks
- Service Tasks
- Audit
- Data Cleanup
- Identity

Tasks

All Tasks Customize your filter

<input checked="" type="checkbox"/>	Last name	First name	Task Name	Status	Created Date ↓	Last Modified	Parent ID
<input checked="" type="checkbox"/>	Smith	John	HR approval	ASSIGNED	3 minutes ago	3 minutes ago	
<input checked="" type="checkbox"/>	Dutton	John	manager approval	ASSIGNED	3 minutes ago	3 minutes ago	
<input checked="" type="checkbox"/>	Smith	John	manager approval	COMPLETED	4 minutes ago	3 minutes ago	

Context menu for a task row:

- (checkbox)
- (checkbox)
- Delete
- Change assignee

Showing 1-3 of 3

Items per page 50 Page 1 of 1

Bulk Assignment

- Devops ▼
- Process Admin ^
- Applications list
- Process Instances
- User Tasks**
- Service Tasks
- Audit
- Data Cleanup
- Identity ▼

Tasks

All Tasks Customize your filter

Last name	First name	Task Name	Status	Created Date ↓	Last Modified
Smith	John	HR approval	ASSIGNED	2 minutes ago	2 minutes ago
Dutton	John	manager approval	ASSIGNED	2 minutes ago	2 minutes ago
Smith	John	manager approval	COMPLETED	2 minutes ago	2 minutes ago

Parent ID ⋮

Columns ✕

🔍 Search

- Last name
- First name
- Task Name
- Status
- Created Date
- Last Modified
- Parent ID
- Id
- Assignee

Apply

Configurable task view with custom workflow attributes.

ALFRESCO PROCESS SERVICES ROADMAP



Next

- More possibilities around dynamic tasks assignments
- Application roles
- More rules for the low code form tool building
- Process analytics
- Test and debug faster
- Improved Rest Connector

FUTURE

Hyland[®]
APA

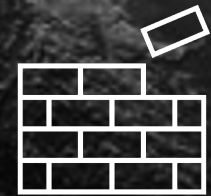
APA technological stack is
at the core of Hyland
product strategy



CUSTOMER
SUCCESS



FLEXIBILITY



OPEN
PLATFORM

NoSQL most scalable
content repository of
the market

Application Design

Custom UI
No Code point and click
composition
Templates

Hyland Low Code Platform

Data Analytics and ML
Platform

Cloud orchestration
More out of the box
SaaS apps connectors
Custom Connectors
RPA integration

Q&A